

1567 Route 442 Highway
Muncy, Pa 17756



Phone: (570) 546-2261
Fax: (570) 546-5903

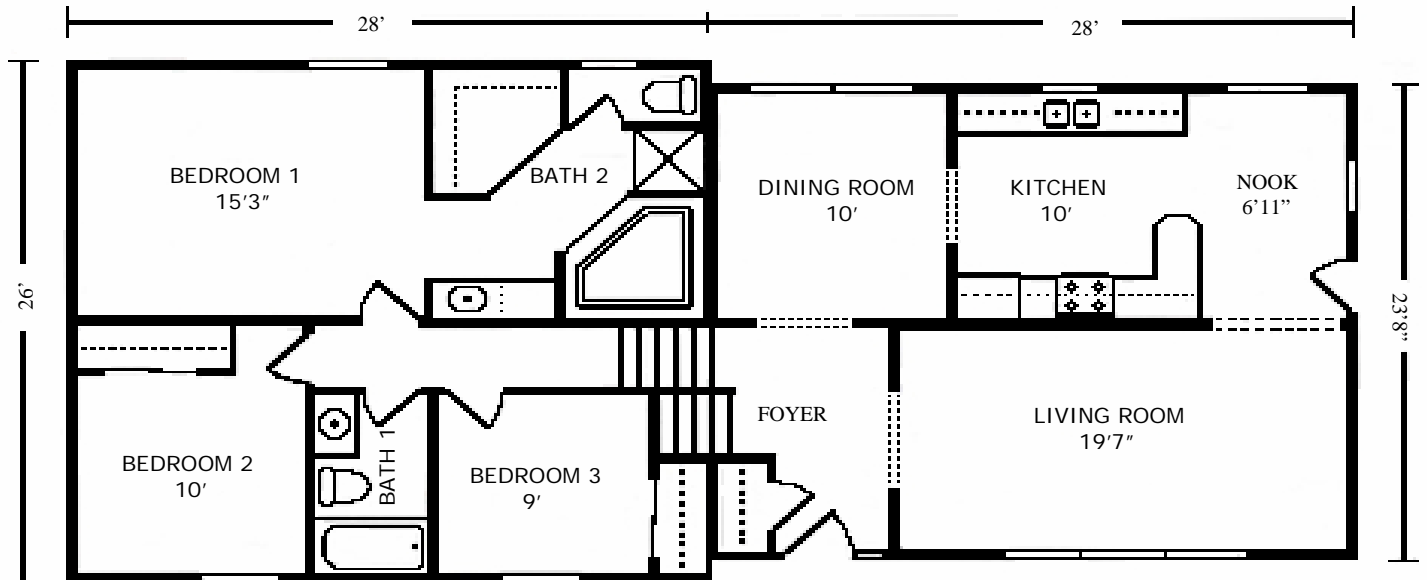


Split Levels

Creative Design with Unlimited Possibilities

PLAN 657 26' X 28'

PLAN 608 23'8" X 28'



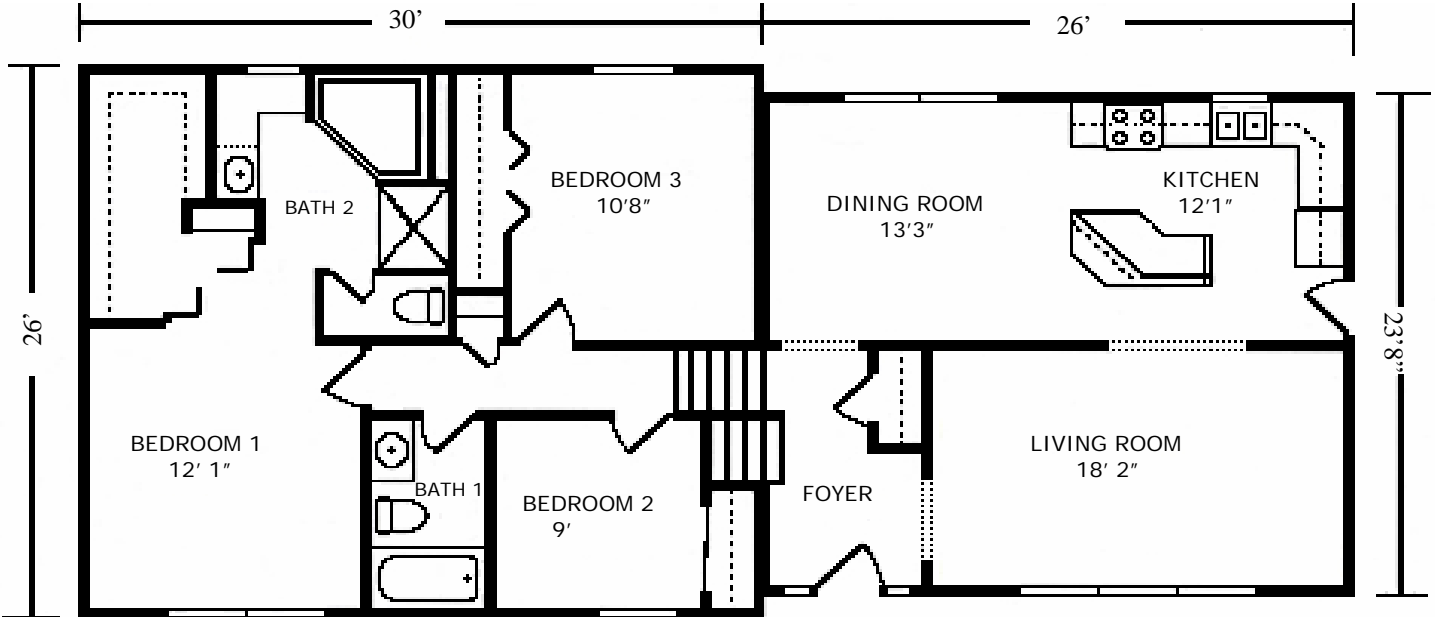
1567 Route 442 Highway
Muncy, Pa 17756

MUNCY HOMES

Phone: (570) 546-2261
Fax: (570) 546-5903

PLAN 658 26' X 30'

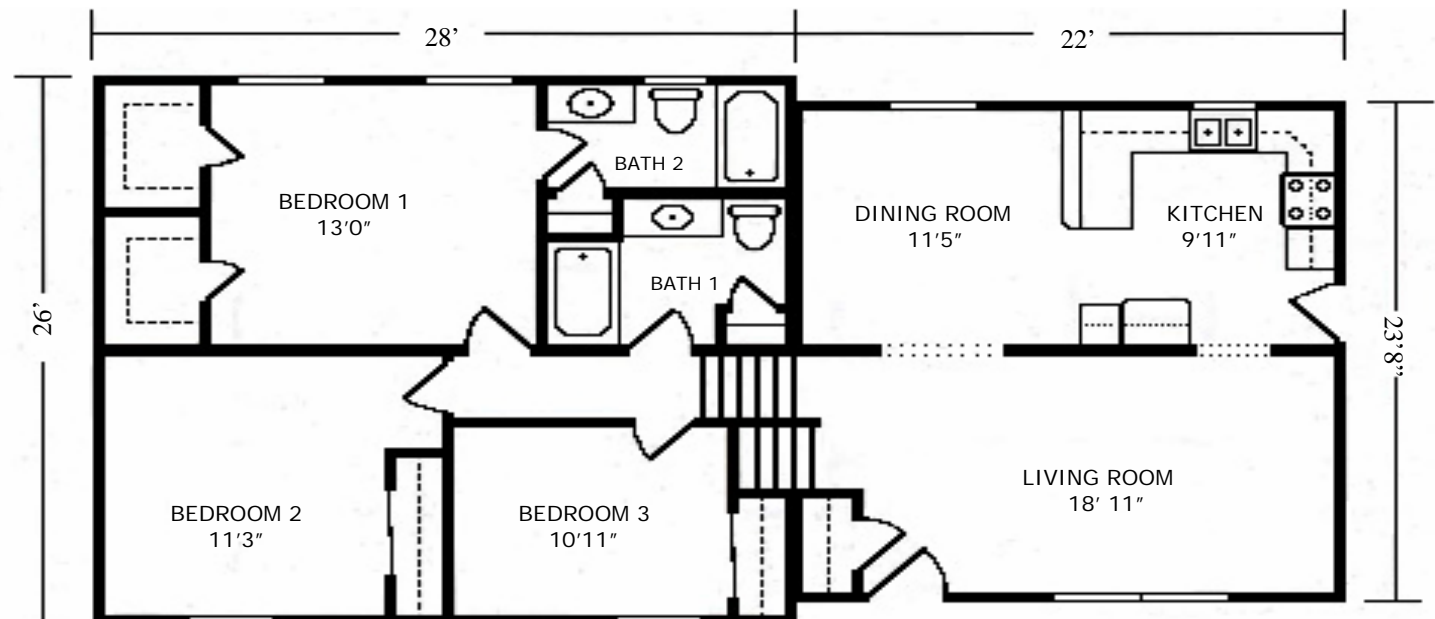
PLAN 607 23'8" X 26'



Creative Design with Unlimited Possibilities

PLAN 656 26' X 28'

PLAN 602 23'8" X 22'



**** Due to our continuing program of Product Improvement, Specification and Prices are subject to change without notice.****

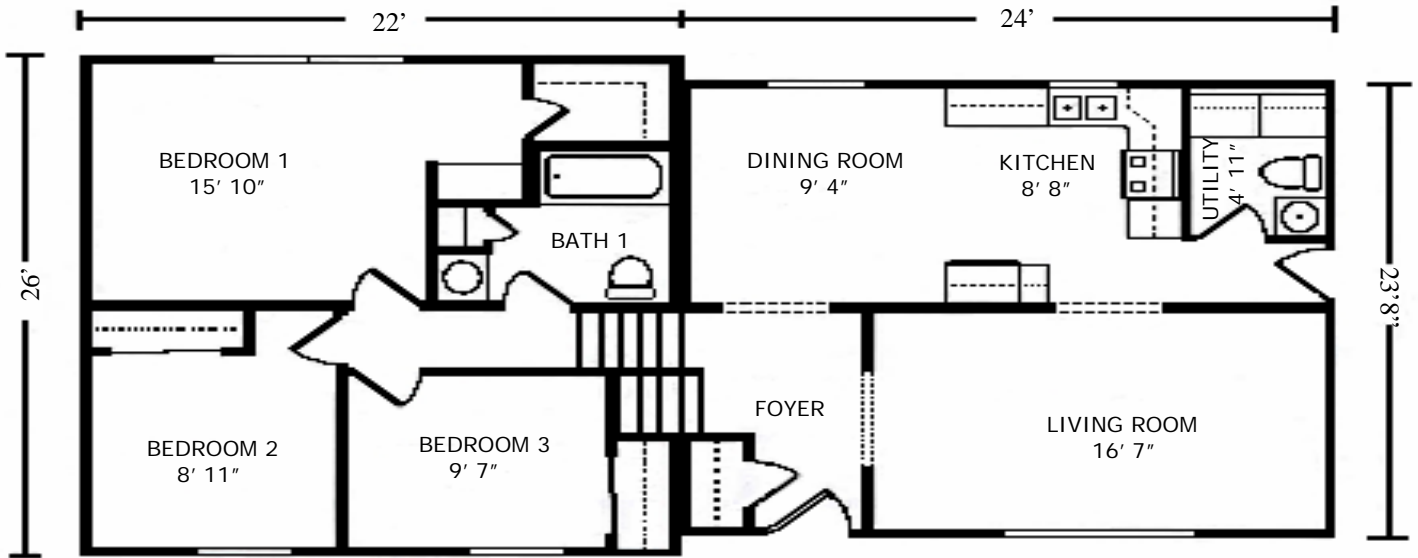
1567 Route 442 Highway
Muncy, Pa 17756

MUNCY HOMES

Phone: (570) 546-2261
Fax: (570) 546-5903

PLAN 651 26' X 22'

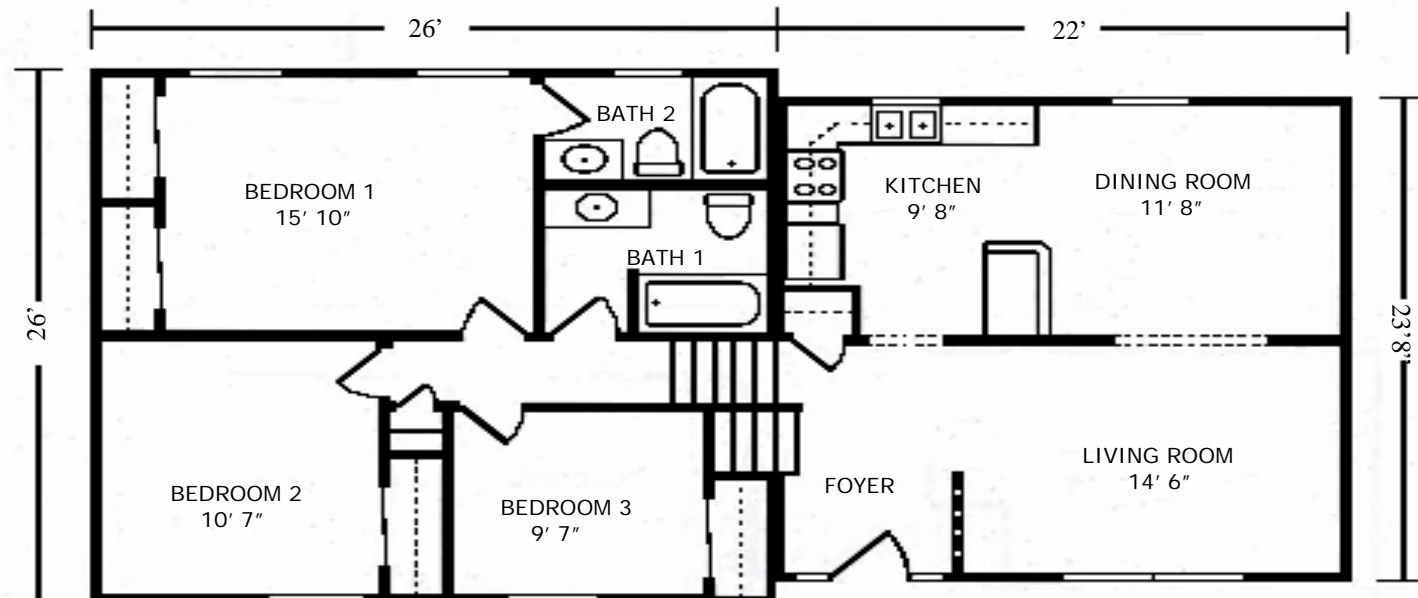
PLAN 604 23'8" X 24'



Creative Design with Unlimited Possibilities

PLAN 655 26' X 26'

PLAN 603 23'8" X 22'



**** Due to our continuing program of Product Improvement, Specification and Prices are subject to change without notice.****

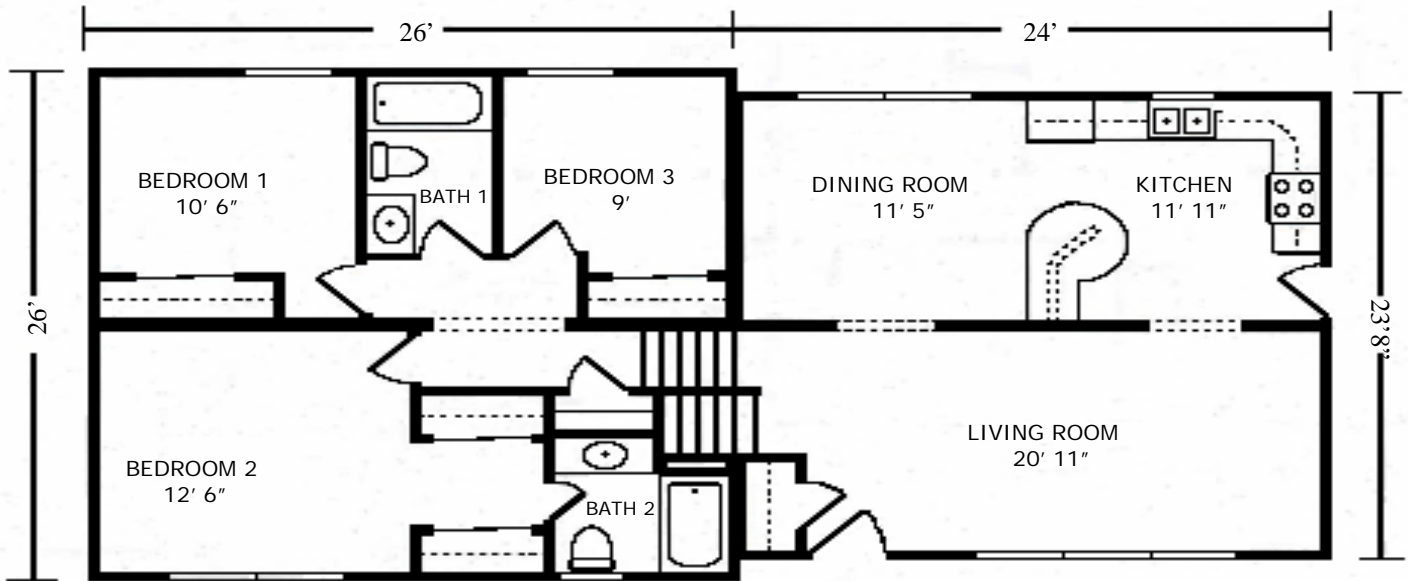
1567 Route 442 Highway
Muncy, Pa 17756

MUNCY HOMES

Phone: (570) 546-2261
Fax: (570) 546-5903

PLAN 654 26' X 26'

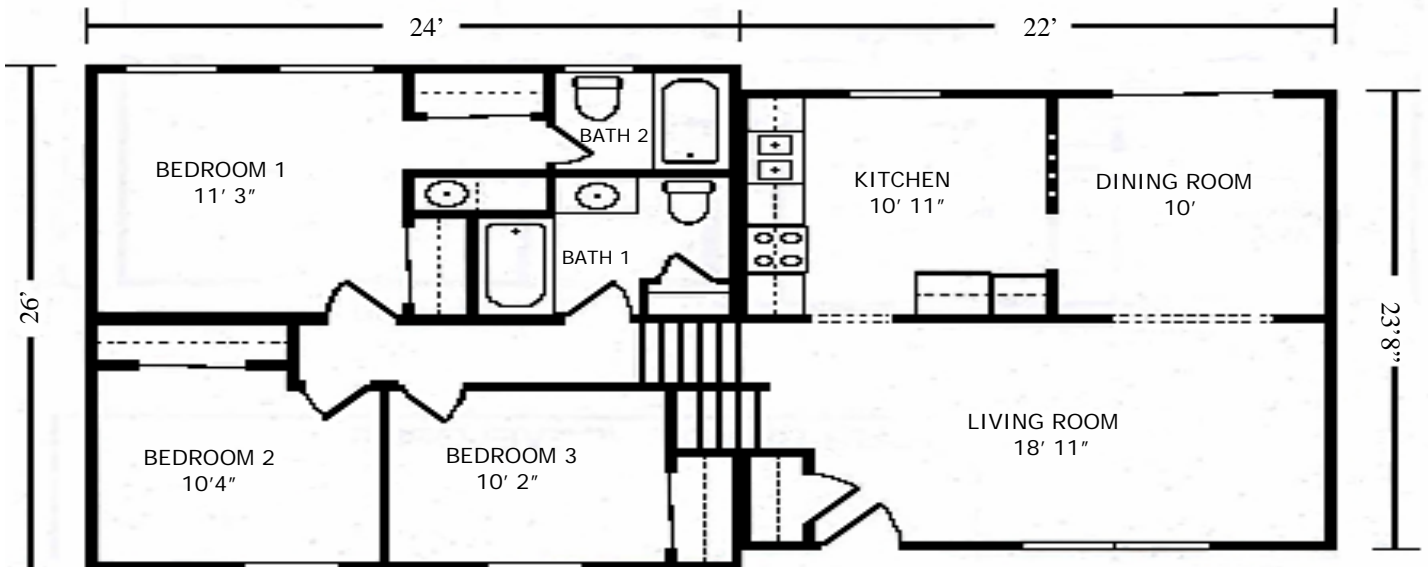
PLAN 605 23'8" X 24'



Creative Design with Unlimited Possibilities

PLAN 652 26' X 24'

PLAN 601 23'8" X 22'

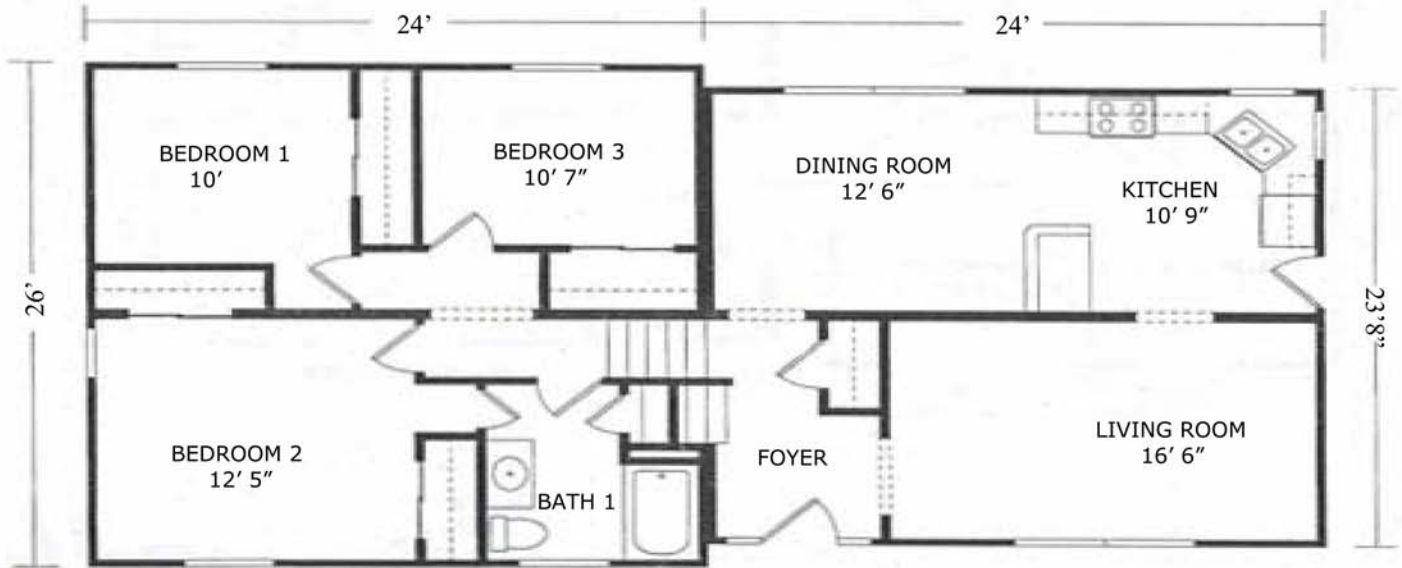


**** Due to our continuing program of Product Improvement, Specification and Prices are subject to change without notice.****

MUNCY HOMES

PLAN 653 24 X 26'

PLAN 606 23'8" X 24'



Creative Design with Unlim.

Patriot Home Sales, Inc.



**3517 Lincoln Hwy. East
Kinzers, PA 17535
Phone: (717) 442 - 8868
sales@patriothomes.biz**

**Route 30 - 12 Miles
East of Lancaster**

Serving: PA, NJ, MD, DE & WV

THE BUILDER/DEVELOPER IS AN INDEPENDENT BUSIN AN AGENT OF MUNCY HOMES. From time to time, Builder perform service work at the request of MUNCY HOMES, but in Developer is still an Independent contractor and is alone responsible for the quality of his work. MUNCY HOMES SHALL HAVE NO RESPO? LIABILITY FOR ANY ACT OR OMISSION OF BUILDER/DEVELOPER OR ANY MATERIAL PROVIDED BY BUILDER/DEVELOPER, CIRCUMSTANCES.



**** Due to our continuing program of Prc

*