



TWO STORY SERIES

COLONIAL PARK

Luxurious Living and Elegant Design

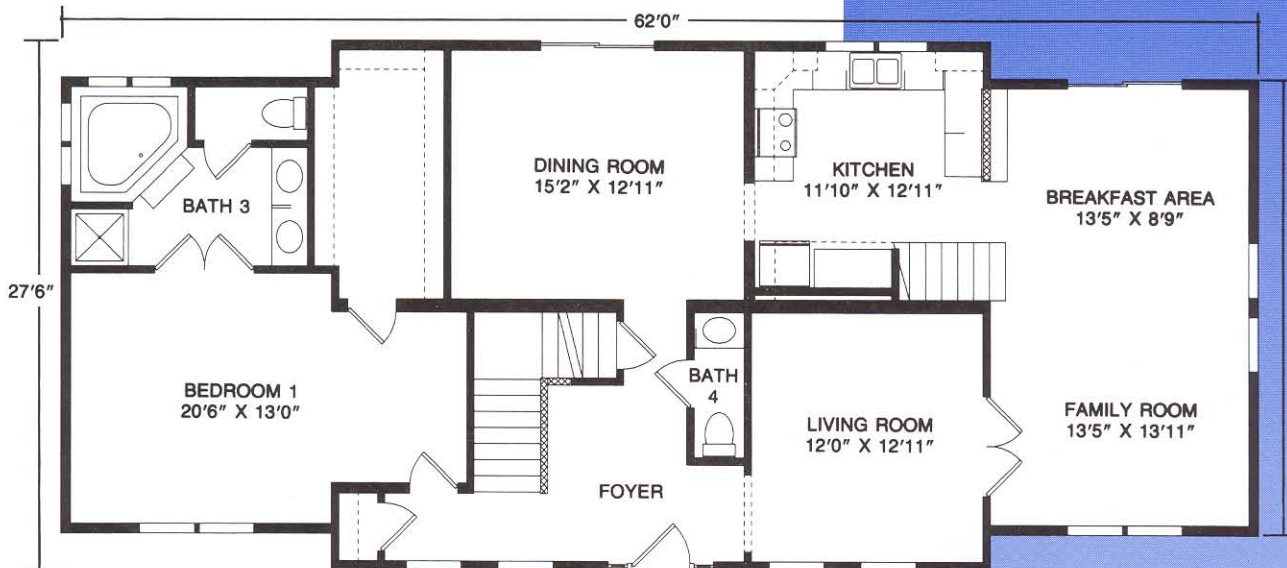
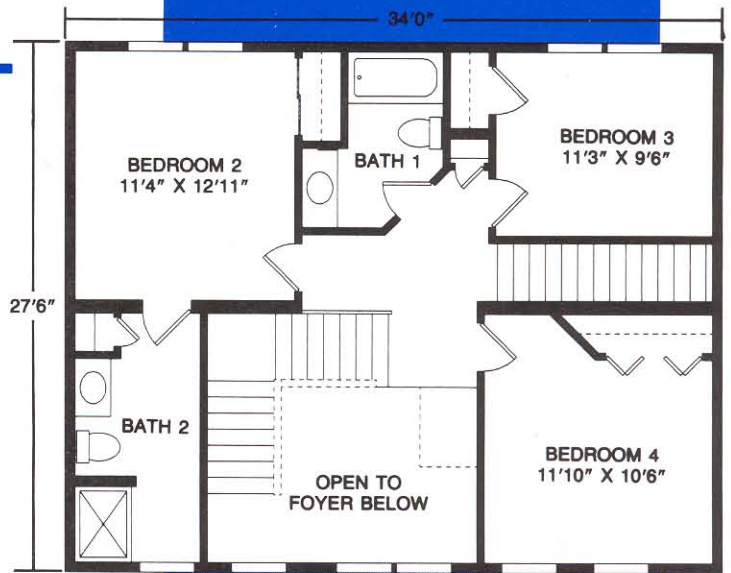
MUNCY HOMES

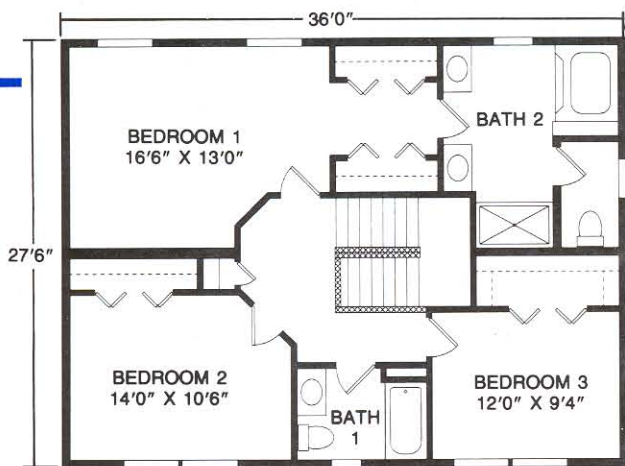
www.patriohomes.biz

The Alexandria

Plan No. 555 ■ 2533 SQ. FT.

The ultimate in luxurious convenience featuring a grand master bedroom suite with walk-in closet and lavish private bath, three additional spacious bedrooms and two and one half baths, large family room and two conveniently located stairs to the second floor.

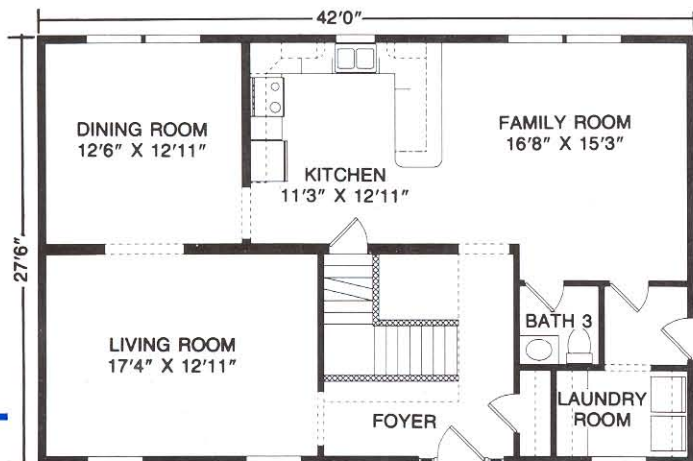
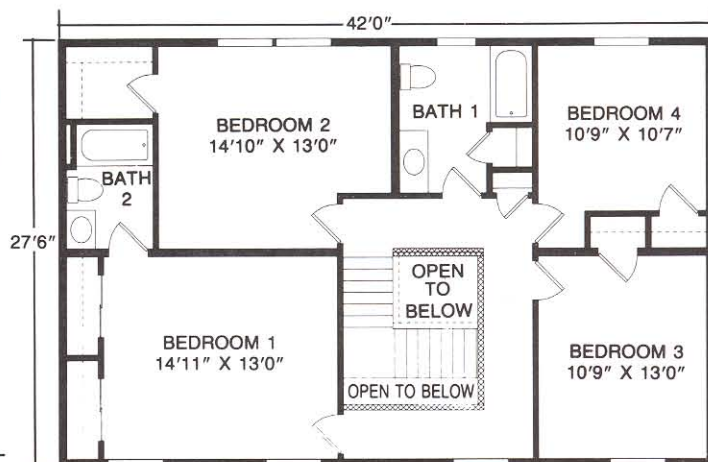
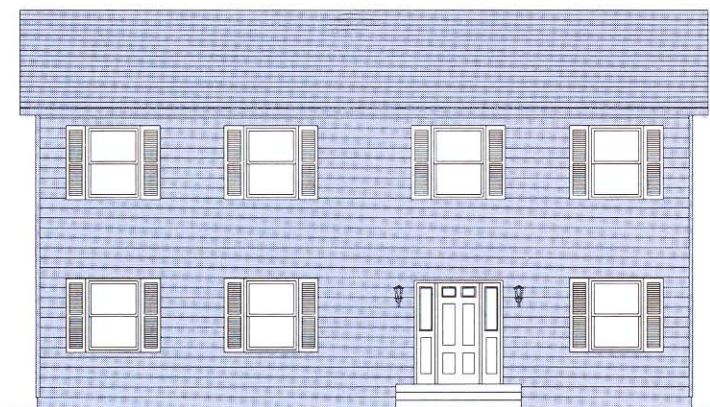
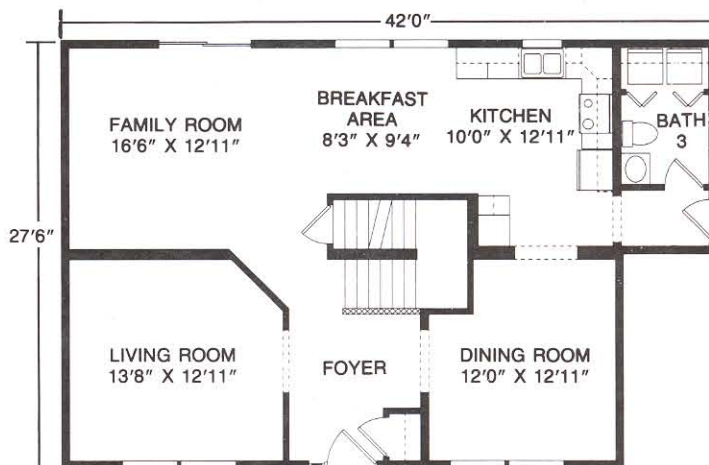




The Coventry

Plan No. 547 ■ 2063 SQ. FT.

Convenience and features that make a house a home, such as tremendous master bedroom with his and her closets, large master bath, functional kitchen with breakfast area and large family room for relaxing.



The Bridgeport

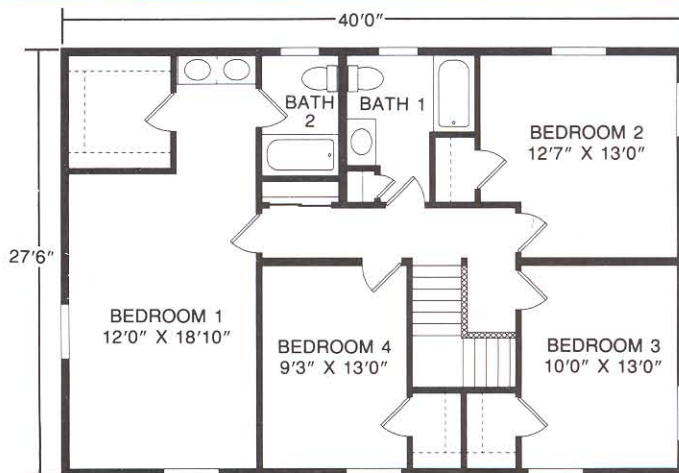
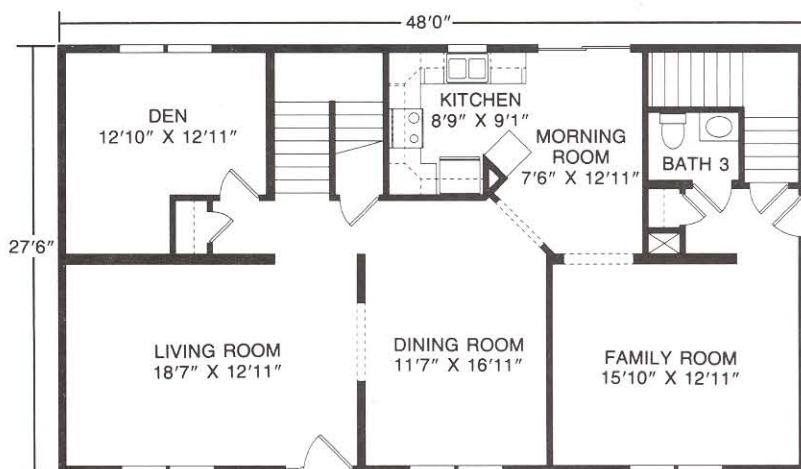
Plan No. 550 ■ 2310 SQ. FT.

Welcome home to comfort with large family room, formal living room, convenient laundry room, master bedroom with private bath and three additional bedrooms.



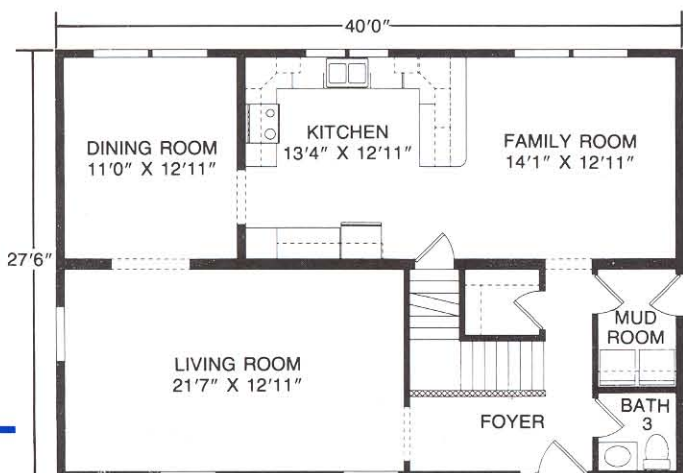
The Abington

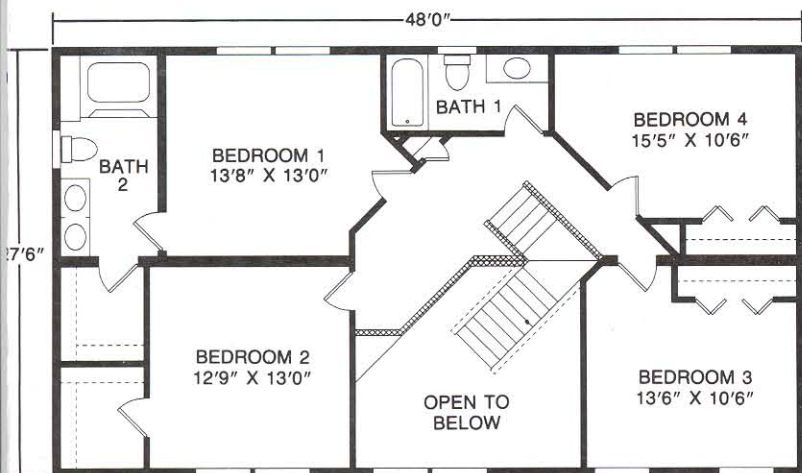
Plan No. 551 ■ 2272 SQ. FT.
A truly elegant design featuring spacious master bathroom and walk-in closet, large family room, convenient kitchen with morning room and a private den or study.



The Richmond

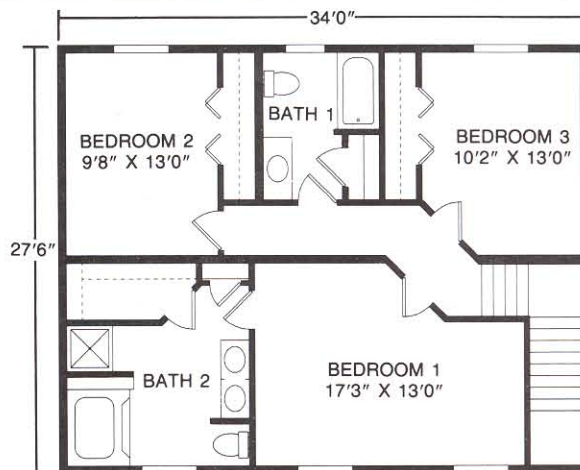
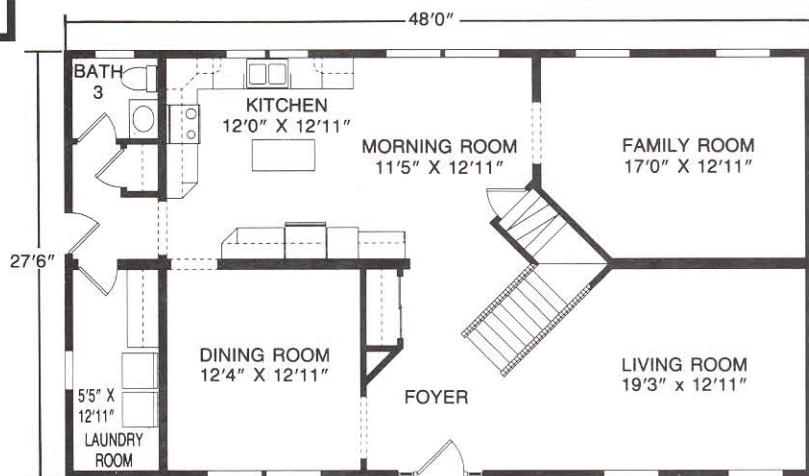
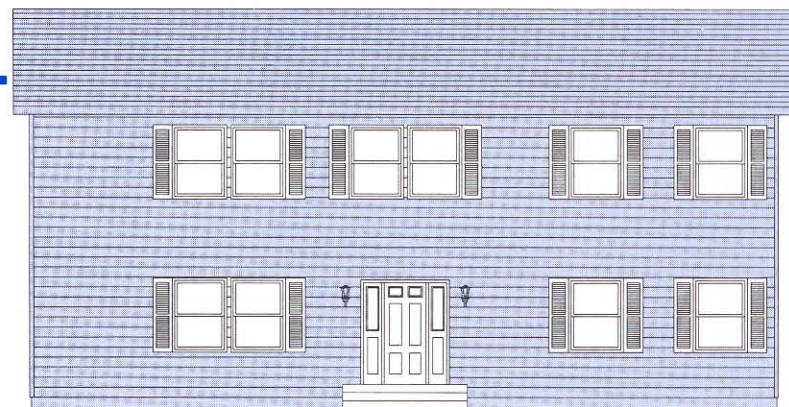
Plan No. 548 ■ 2200 SQ. FT.
Elegant space for living and entertaining with expansive formal living room, large family room, grand master bedroom with walk-in closet and private bath, three additional bedrooms and one and one half baths.





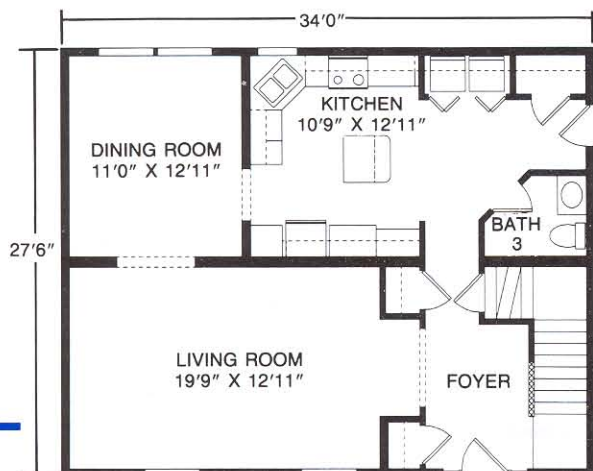
The Brandywine

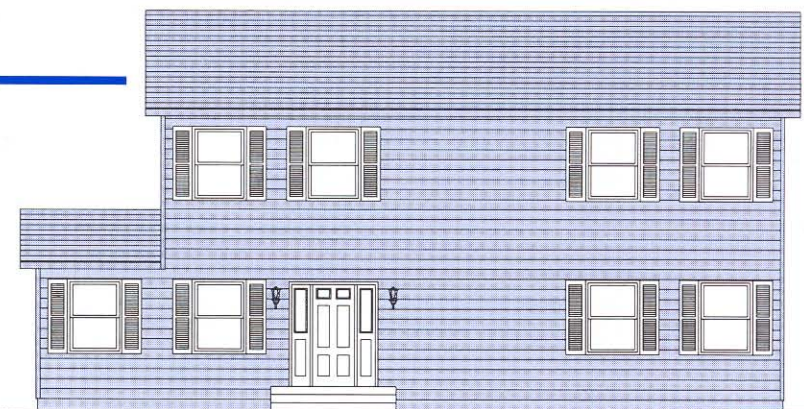
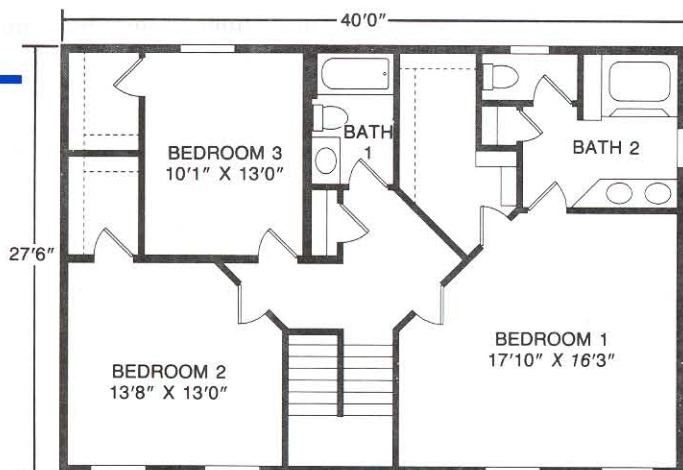
Plan No. 552 ■ 2640 SQ. FT.
The open foyer design of this futuristic plan is sure to be the talk of your neighborhood. Featuring large family room, four bedrooms, convenient kitchen with breakfast area and separate laundry room.



The Sterling

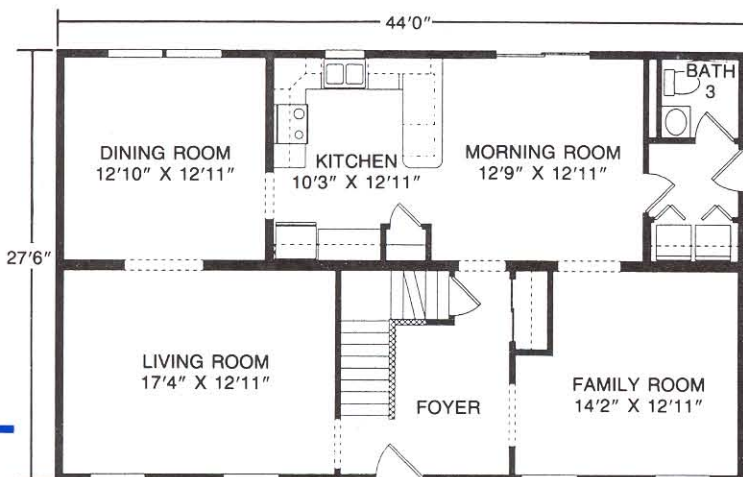
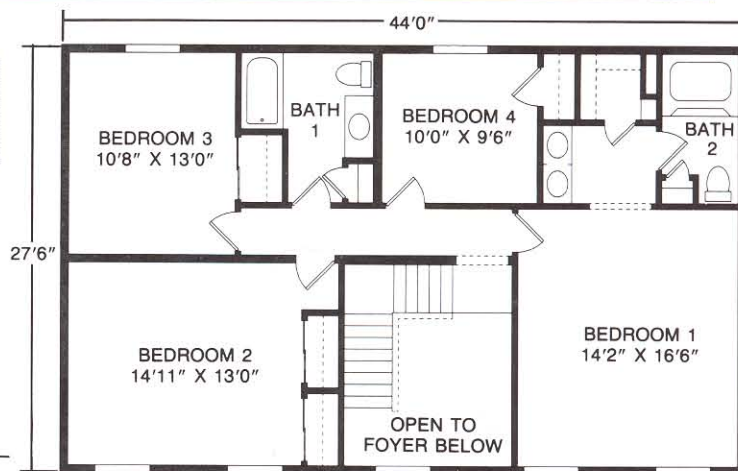
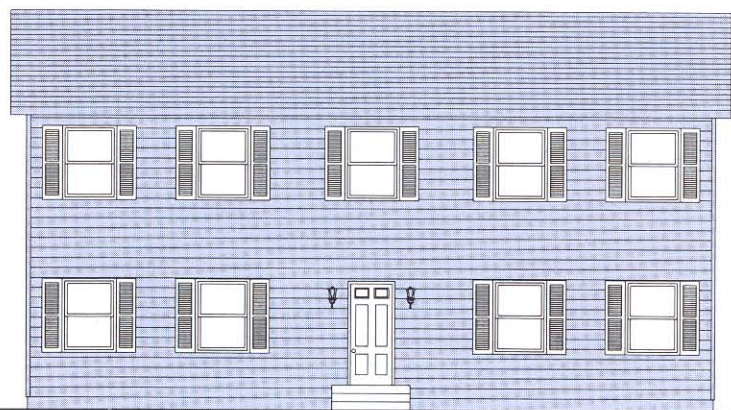
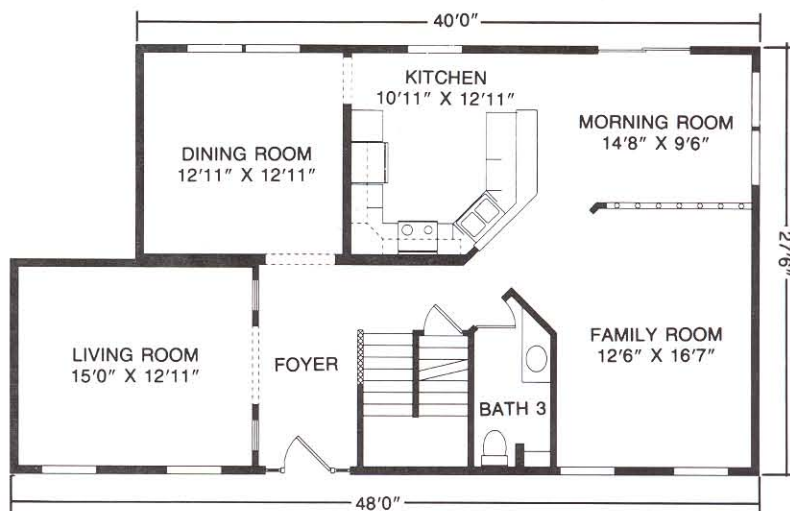
Plan No. 546 ■ 1870 SQ. FT.
Comfort and convenience with expansive master bedroom suite with adjoining bath, two additional bedrooms, large kitchen with island and convenient laundry area.





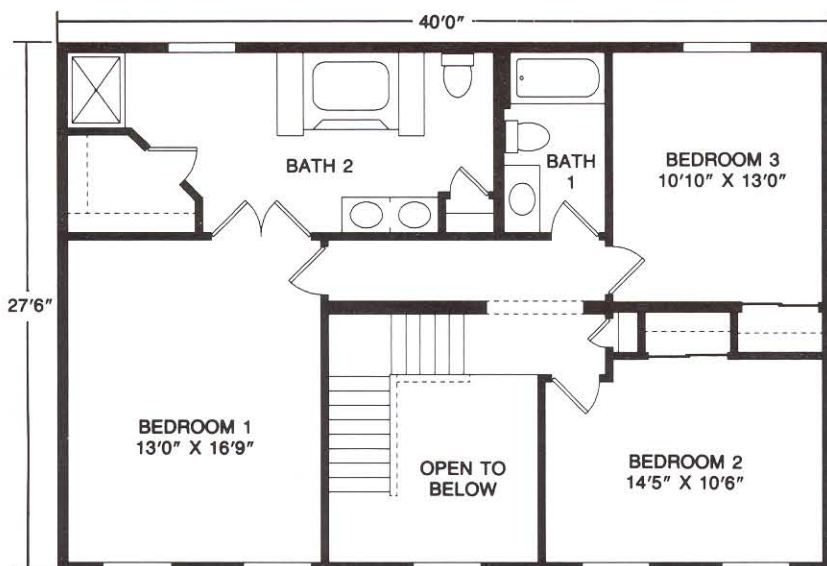
The Kensington

Plan No. 549 ■ 2310 SQ. FT.
 Feel the openness of the large family room, kitchen and morning room areas. The large master bedroom suite with private bath combines with two additional bedrooms, all with walk-in closets, to make this the ideal home for you.



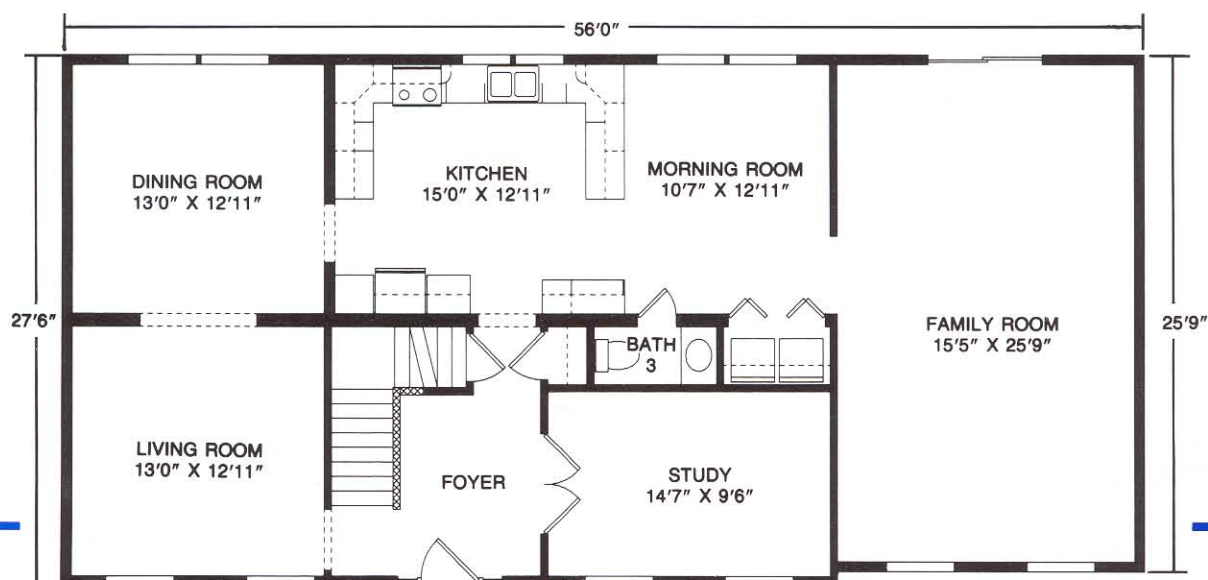
The Manchester

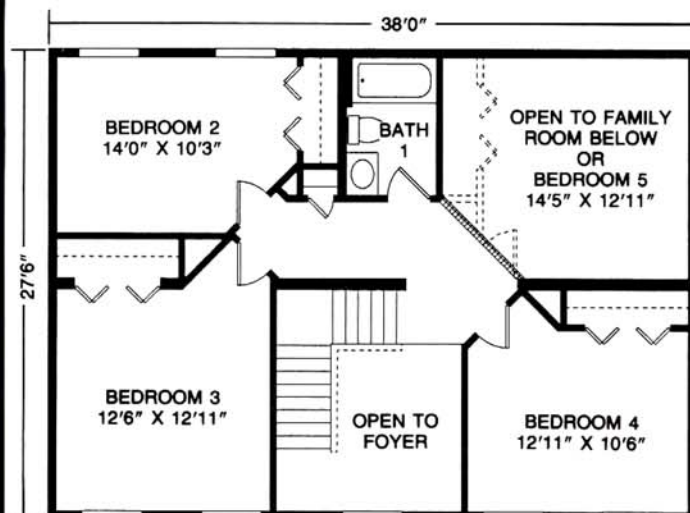
Plan No. 544 ■ 2420 SQ. FT.
 Large rooms provide more than adequate space in this four bedroom home featuring open foyer, first floor laundry area, formal living and dining rooms and master bedroom suite with private bath.



The Halifax

Plan No. 553 ■ 2628 SQ. FT.
 A large family room and grand master bedroom with luxurious private bath are the highlights of this home. Featuring open foyer, private study and massive kitchen.

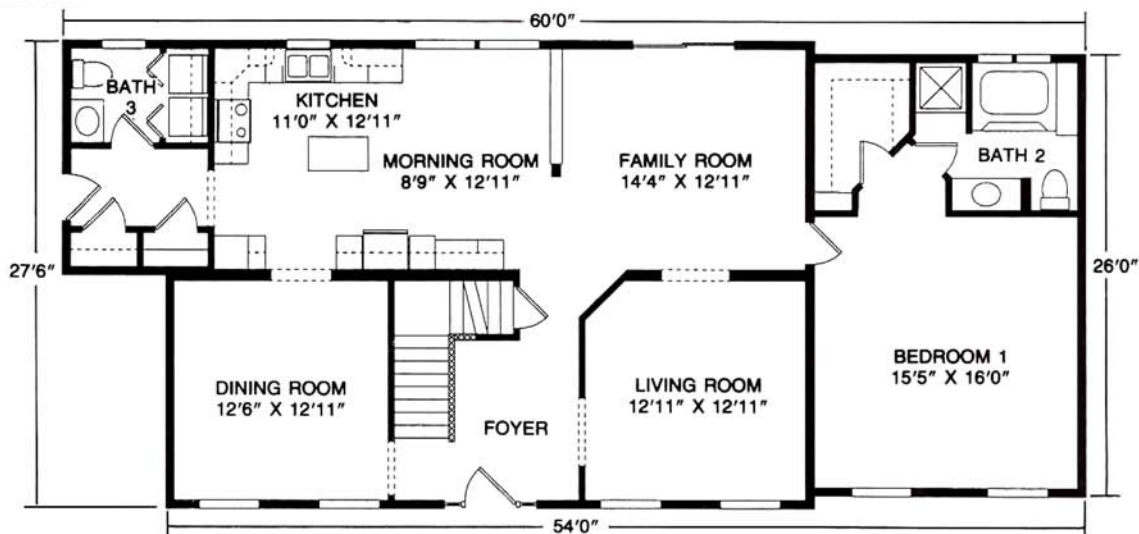




The Berkeley

Plan No. 554 ■ 2589 SQ. FT.

A true family home with immense, master bedroom and private bath, large family room open to the second floor, large kitchen and convenient first floor laundry area. Optional fifth bedroom available.



MUNCY HOMES

Patriot Home Sales, Inc.



**3517 Lincoln Hwy. East
Kinzers, PA 17535**

**Phone: (717) 442 - 8868
sales@patriothomes.biz**

**Route 30 - 12 Miles
East of Lancaster**

Serving: PA, NJ, MD, DE & WV

THE BUILDER/DEVELOPER IS AN INDEPENDENT BUSINESSMAN, NOT AN AGENT OF MUNCY HOMES. From time to time, Builder/Developer may perform service work at the request of Muncy Homes, but in doing so Builder/Developer is still an independent contractor and is alone responsible for the quality of his work. MUNCY HOMES SHALL HAVE NO RESPONSIBILITY OR LIABILITY FOR ANY ACT OR OMISSION OF BUILDER/DEVELOPER OR ANY MATERIAL PROVIDED BY BUILDER/DEVELOPER, UNDER ANY CIRCUMSTANCES.